



Meditech

Meditech Ortho India Company



Hip Prosthesis Implant

Manufacturer & Exporter
Orthopaedic Implants & Instruments

FDA
CERTIFIED

CE
CERTIFIED

ISO 9001:2008
ISO 13484:2012

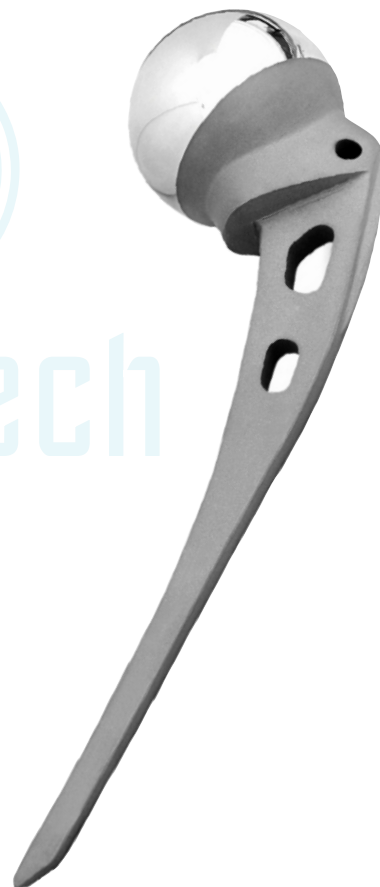
Austin Moore Hip Prosthesis Broad Stem

Primary Use : Hip Fracture

SS. 316L
Prod. Code

SPECIFICATION
(Sizes mm)

MS 401.37	37mm
MS 401.38	38mm
MS 401.39	39mm
MS 401.40	40mm
MS 401.41	41mm
MS 401.42	42mm
MS 401.43	43mm
MS 401.44	44mm
MS 401.45	45mm
MS 401.46	46mm
MS 401.47	47mm
MS 401.48	48mm
MS 401.49	49mm
MS 401.50	50mm
MS 401.51	51mm
MS 401.52	52mm
MS 401.53	53mm
MS 401.54	54mm
MS 401.55	55mm



Austin Moore Hip Prosthesis Narrow Stem

Primary Use : Hip Fracture

SS. 316L
Prod. Code

SPECIFICATION
(Sizes mm)

MS 402.37	37mm
MS 402.38	38mm
MS 402.39	39mm
MS 402.40	40mm
MS 402.41	41mm
MS 402.42	42mm
MS 402.43	43mm
MS 402.44	44mm
MS 402.45	45mm
MS 402.46	46mm
MS 402.47	47mm
MS 402.48	48mm
MS 402.49	49mm
MS 402.50	50mm
MS 402.51	51mm
MS 402.52	52mm
MS 402.53	53mm
MS 402.54	54mm
MS 402.55	55mm



Austin Moore Hip Prosthesis Standard Stem

Primary Use : Hip Fracture

SS. 316L
Prod. Code

SPECIFICATION
(Sizes mm)

MS 403.37	37mm
MS 403.38	38mm
MS 403.39	39mm
MS 403.40	40mm
MS 403.41	41mm
MS 403.42	42mm
MS 403.43	43mm
MS 403.44	44mm
MS 403.45	45mm
MS 403.46	46mm
MS 403.47	47mm
MS 403.48	48mm
MS 403.49	49mm
MS 403.50	50mm
MS 403.51	51mm
MS 403.52	52mm
MS 403.53	53mm
MS 403.54	54mm
MS 403.55	55mm



Meditech



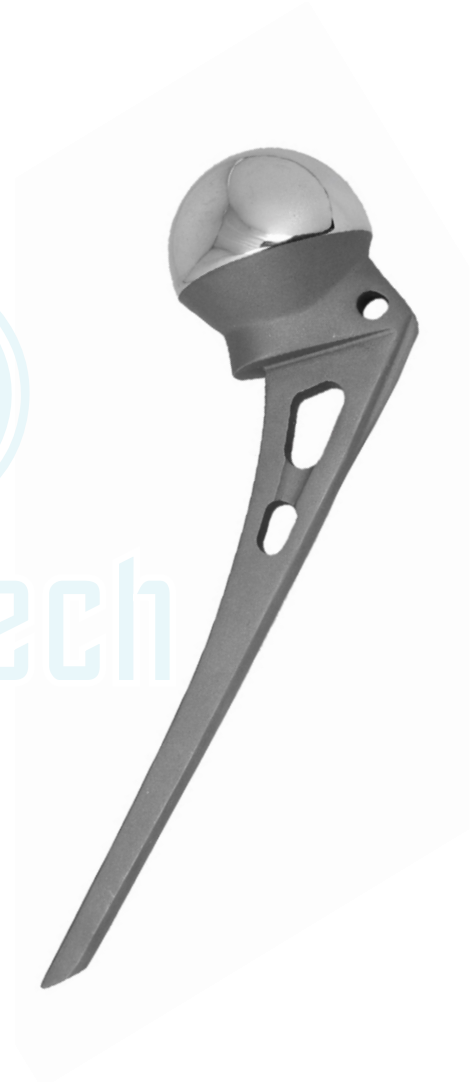
Austin Moore Hip Prosthesis Step Ball Stem

Primary Use : Hip Fracture

SS. 316L
Prod. Code

SPECIFICATION
(Sizes mm)

MS 404.37	37mm
MS 404.38	38mm
MS 404.39	39mm
MS 404.40	40mm
MS 404.41	41mm
MS 404.42	42mm
MS 404.43	43mm
MS 404.44	44mm
MS 404.45	45mm
MS 404.46	46mm
MS 404.47	47mm
MS 404.48	48mm
MS 404.49	49mm
MS 404.50	50mm
MS 404.51	51mm
MS 404.52	52mm
MS 404.53	53mm
MS 404.54	54mm
MS 404.55	55mm



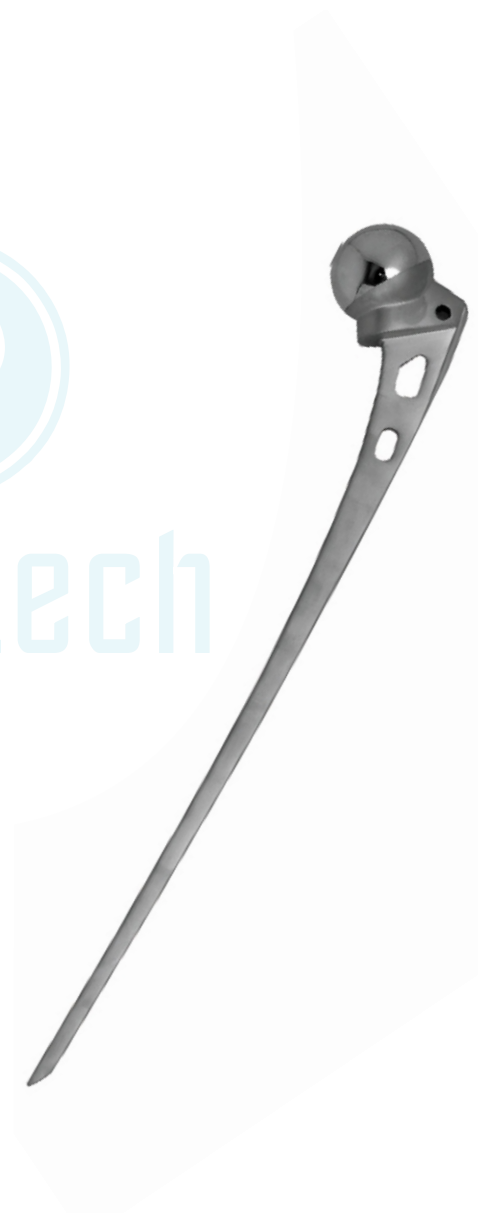
Austin Moore Hip Prosthesis Long Stem

Primary Use : Hip Fracture

SS. 316L
Prod. Code

SPECIFICATION
(Sizes mm)

MS 405.37	37mm
MS 405.38	38mm
MS 405.39	39mm
MS 405.40	40mm
MS 405.41	41mm
MS 405.42	42mm
MS 405.43	43mm
MS 405.44	44mm
MS 405.45	45mm
MS 405.46	46mm
MS 405.47	47mm
MS 405.48	48mm
MS 405.49	49mm
MS 405.50	50mm
MS 405.51	51mm
MS 405.52	52mm
MS 405.53	53mm
MS 405.54	54mm
S 405.55	55mm



Thompson Hip Prosthesis Full Collar

Primary Use : Hip Fracture

SS. 316L
Prod. Code

SPECIFICATION
(Sizes mm)

MS 406.37	37mm
MS 406.38	38mm
MS 406.39	39mm
MS 406.40	40mm
MS 406.41	41mm
MS 406.42	42mm
MS 406.43	43mm
MS 406.44	44mm
MS 406.45	45mm
MS 406.46	46mm
MS 406.47	47mm
MS 406.48	48mm
MS 406.49	49mm
MS 406.50	50mm
MS 406.51	51mm
MS 406.52	52mm
MS 406.53	53mm
MS 406.54	54mm
MS 406.55	55mm



Thompson Hip Prosthesis Narrow Stem

Primary Use : Hip Fracture

SS. 316L
Prod. Code

SPECIFICATION
(Sizes mm)

MS 407.37	37mm
MS 407.38	38mm
MS 407.39	39mm
MS 407.40	40mm
MS 407.41	41mm
MS 407.42	42mm
MS 407.43	43mm
MS 407.44	44mm
MS 407.45	45mm
MS 407.46	46mm
MS 407.47	47mm
MS 407.48	48mm
MS 407.49	49mm
MS 407.50	50mm
MS 407.51	51mm
MS 407.52	52mm
MS 407.53	53mm
MS 407.54	54mm
MS 407.55	55mm



Thompson Hip Prosthesis Plain Stem

Primary Use : Hip Fracture

SS. 316L
Prod. Code

SPECIFICATION
(Sizes mm)

MS 408.37	37mm
MS 408.38	38mm
MS 408.39	39mm
MS 408.40	40mm
MS 408.41	41mm
MS 408.42	42mm
MS 408.43	43mm
MS 408.44	44mm
MS 408.45	45mm
MS 408.46	46mm
MS 408.47	47mm
MS 408.48	48mm
MS 408.49	49mm
MS 408.50	50mm
MS 408.51	51mm
MS 408.52	52mm
MS 408.53	53mm
MS 408.54	54mm
MS 408.55	55mm



Meditech



Thompson Hip Prosthesis Standard Stem

Primary Use : Hip Fracture

SS. 316L
Prod. Code

SPECIFICATION
(Sizes mm)

MS 409.37	37mm
MS 409.38	38mm
MS 409.39	39mm
MS 409.40	40mm
MS 409.41	41mm
MS 409.42	42mm
MS 409.43	43mm
MS 409.44	44mm
MS 409.45	45mm
MS 409.46	46mm
MS 409.47	47mm
MS 409.48	48mm
MS 409.49	49mm
MS 409.50	50mm
MS 409.51	51mm
MS 409.52	52mm
MS 409.53	53mm
MS 409.54	54mm
MS 409.55	55mm



Meditech



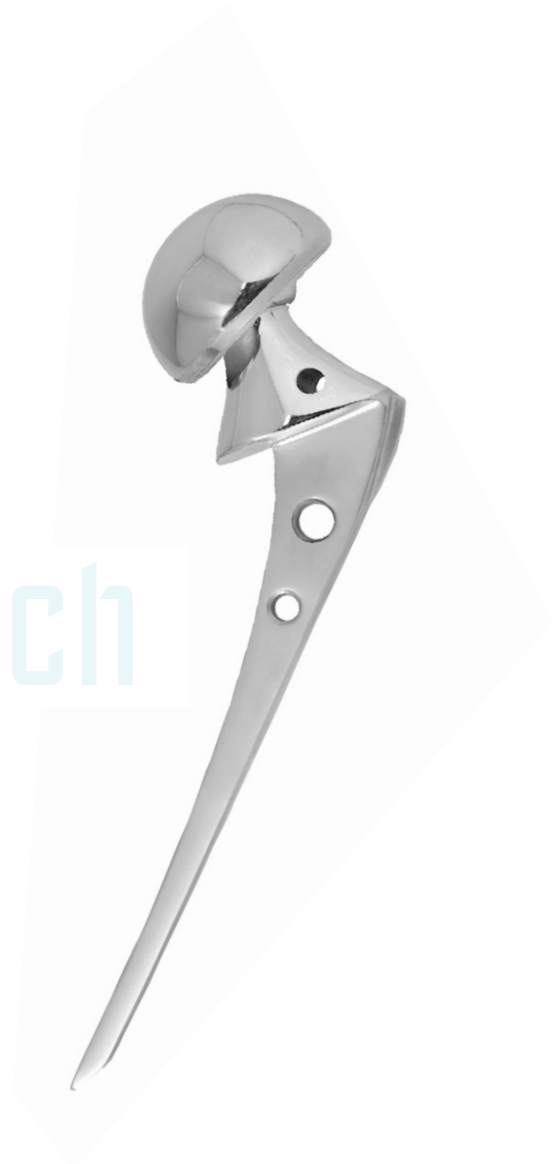
Bipolar Hip Prosthesis Perforated Sterile

Primary Use : Hip Fracture

SS. 316L
Prod. Code

SPECIFICATION
(Sizes mm)

MS 410.37	37mm
MS 410.38	38mm
MS 410.39	39mm
MS 410.40	40mm
MS 410.41	41mm
MS 410.42	42mm
MS 410.43	43mm
MS 410.44	44mm
MS 410.45	45mm
MS 410.46	46mm
MS 410.47	47mm
MS 410.48	48mm
MS 410.49	49mm
MS 410.50	50mm
MS 410.51	51mm
MS 410.52	52mm
MS 410.53	53mm
MS 410.54	54mm
MS 410.55	55mm



Bipolar Hip Prosthesis Perforated Non Sterile

Primary Use : Hip Fracture

SS. 316L
Prod. Code

SPECIFICATION
(Sizes mm)

MS 411.37	37mm
MS 411.38	38mm
MS 411.39	39mm
MS 411.40	40mm
MS 411.41	41mm
MS 411.42	42mm
MS 411.43	43mm
MS 411.44	44mm
MS 411.45	45mm
MS 411.46	46mm
MS 411.47	47mm
MS 411.48	48mm
MS 411.49	49mm
MS 411.50	50mm
MS 411.51	51mm
MS 411.52	52mm
MS 411.53	53mm
MS 411.54	54mm
MS 411.55	55mm



Bipolar Hip Prosthesis Non Perforated, Non Sterile

Primary Use : Hip Fracture

SS. 316L
Prod. Code

SPECIFICATION
(Sizes mm)

MS 412.37	37mm
MS 412.38	38mm
MS 412.39	39mm
MS 412.40	40mm
MS 412.41	41mm
MS 412.42	42mm
MS 412.43	43mm
MS 412.44	44mm
MS 412.45	45mm
MS 412.46	46mm
MS 412.47	47mm
MS 412.48	48mm
MS 412.49	49mm
MS 412.50	50mm
MS 412.51	51mm
MS 412.52	52mm
MS 412.53	53mm
MS 412.54	54mm
MS 412.55	55mm



Bipolar Hip Prosthesis Non Perforated, Sterile

Primary Use : Hip Fracture

SS. 316L
Prod. Code

SPECIFICATION
(Sizes mm)

MS 413.37	37mm
MS 413.38	38mm
MS 413.39	39mm
MS 413.40	40mm
MS 413.41	41mm
MS 413.42	42mm
MS 413.43	43mm
MS 413.44	44mm
MS 413.45	45mm
MS 413.46	46mm
MS 413.47	47mm
MS 413.48	48mm
MS 413.49	49mm
MS 413.50	50mm
MS 413.51	51mm
MS 413.52	52mm
MS 413.53	53mm
MS 413.54	54mm
MS 413.55	55mm



Bipolar Hip Prosthesis Perforated Long Stem Sterile

Primary Use : Hip Fracture

SS. 316L
Prod. Code

SPECIFICATION
(Sizes mm)

MS 414.37	37mm
MS 414.38	38mm
MS 414.39	39mm
MS 414.40	40mm
MS 414.41	41mm
MS 414.42	42mm
MS 414.43	43mm
MS 414.44	44mm
MS 414.45	45mm
MS 414.46	46mm
MS 414.47	47mm
MS 414.48	48mm
MS 414.49	49mm
MS 414.50	50mm
MS 414.51	51mm
MS 414.52	52mm
MS 414.53	53mm
MS 414.54	54mm
MS 414.55	55mm



Bipolar Hip Prosthesis Non Perforated Long Stem Sterile

Primary Use : Hip Fracture

SS. 316L
Prod. Code

SPECIFICATION
(Sizes mm)

MS 415.37	37mm
MS 415.38	38mm
MS 415.39	39mm
MS 415.40	40mm
MS 415.41	41mm
MS 415.42	42mm
MS 415.43	43mm
MS 415.44	44mm
MS 415.45	45mm
MS 415.46	46mm
MS 415.47	47mm
MS 415.48	48mm
MS 415.49	49mm
MS 415.50	50mm
MS 415.51	51mm
MS 415.52	52mm
MS 415.53	53mm
MS 415.54	54mm
MS 415.55	55mm



Meditech





Meditech

Meditech Ortho India Company



Meditech Ortho India Company

© Khasra No 28/19, House No 742, Ground Floor, Gali No - 5/12,
Village Jharoda Majra, Sangam Vihar, North East Delhi - 110084

© + 91-9716713263